

# CAROL PERLINGEIRO

height 5'9.5 · bust 34" · cup A/B · waist 24.5" · hips 35.5" · dress 36 EU/6 US/8 UK  
shoes size 40 EU/9 US/6.5 UK · hair brown · eyes brown



# CAROL PERLINGEIRO

height 5'9.5 · bust 34" · cup A/B · waist 24.5" · hips 35.5" · dress 36 EU/6 US/8 UK  
shoes size 40 EU/9 US/6.5 UK · hair brown · eyes brown



MGM  
MODELS

MGM  
MODELS

# CAROL PERLINGEIRO

height 5'9.5 · bust 34" · cup A/B · waist 24.5" · hips 35.5" · dress 36 EU/6 US/8 UK  
shoes size 40 EU/9 US/6.5 UK · hair brown · eyes brown



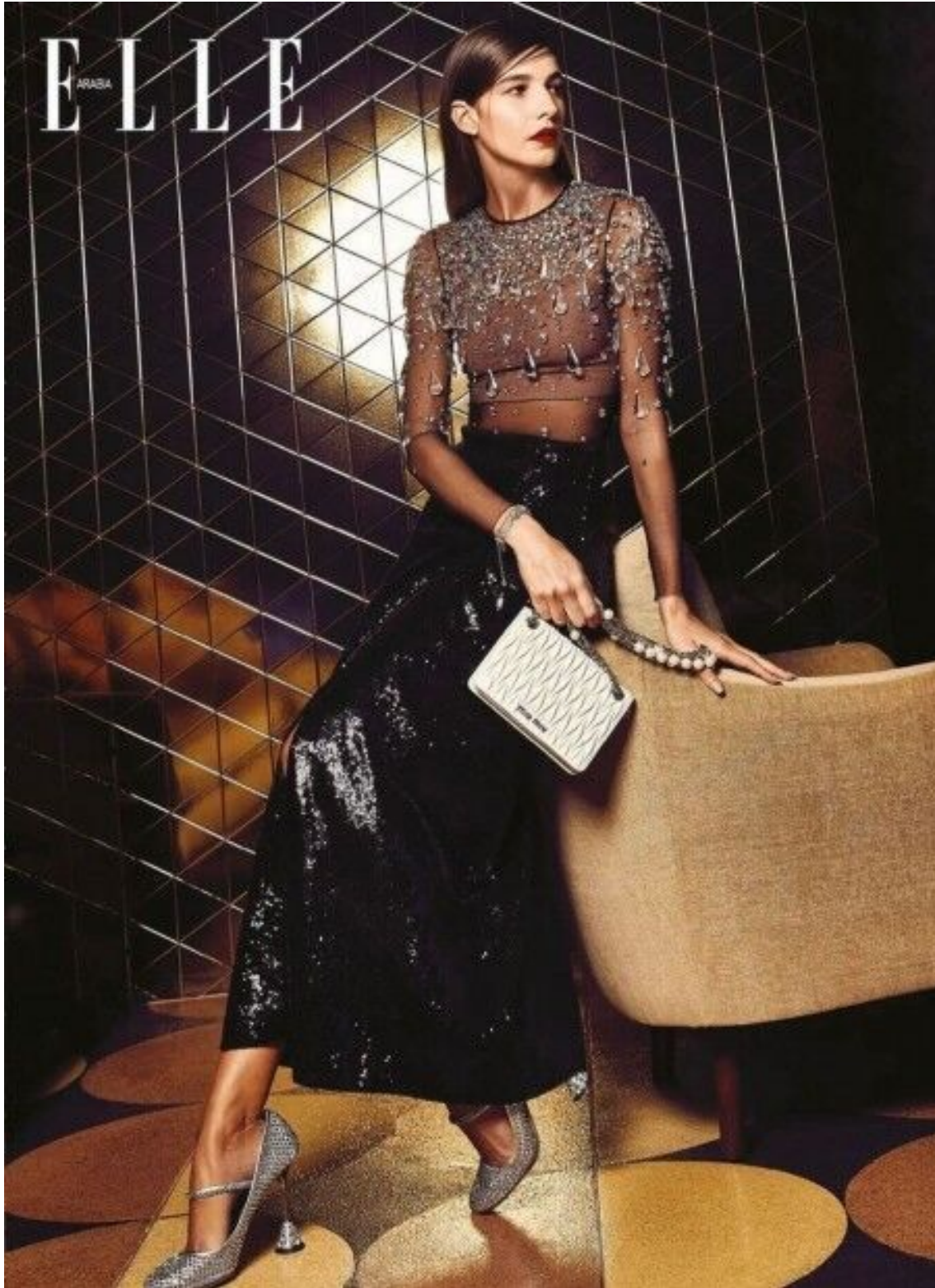
# CAROL PERLINGEIRO

height 5'9.5 · bust 34" · cup A/B · waist 24.5" · hips 35.5" · dress 36 EU/6 US/8 UK  
shoes size 40 EU/9 US/6.5 UK · hair brown · eyes brown



# CAROL PERLINGEIRO

height 5'9.5 · bust 34" · cup A/B · waist 24.5" · hips 35.5" · dress 36 EU/6 US/8 UK  
shoes size 40 EU/9 US/6.5 UK · hair brown · eyes brown



# CAROL PERLINGEIRO

height 5'9.5 · bust 34" · cup A/B · waist 24.5" · hips 35.5" · dress 36 EU/6 US/8 UK  
shoes size 40 EU/9 US/6.5 UK · hair brown · eyes brown



HER:  
Parmigiani Fleurier Tonda PF  
Micro-Rotor in rose gold  
Dress Etro  
Belt Elisabetta Franchi

# CAROL PERLINGEIRO

height 5'9.5 · bust 34" · cup A/B · waist 24.5" · hips 35.5" · dress 36 EU/6 US/8 UK  
shoes size 40 EU/9 US/6.5 UK · hair brown · eyes brown



# CAROL PERLINGEIRO

height 5'9.5 · bust 34" · cup A/B · waist 24.5" · hips 35.5" · dress 36 EU/6 US/8 UK  
shoes size 40 EU/9 US/6.5 UK · hair brown · eyes brown



MGM  
MODELS

MGM  
MODELS



# CAROL PERLINGEIRO

height 5'9.5 · bust 34" · cup A/B · waist 24.5" · hips 35.5" · dress 36 EU/6 US/8 UK  
shoes size 40 EU/9 US/6.5 UK · hair brown · eyes brown



# CAROL PERLINGEIRO

height 5'9.5 · bust 34" · cup A/B · waist 24.5" · hips 35.5" · dress 36 EU/6 US/8 UK  
shoes size 40 EU/9 US/6.5 UK · hair brown · eyes brown



# CAROL PERLINGEIRO

height 5'9.5 · bust 34" · cup A/B · waist 24.5" · hips 35.5" · dress 36 EU/6 US/8 UK  
shoes size 40 EU/9 US/6.5 UK · hair brown · eyes brown



# CAROL PERLINGEIRO

height 5'9.5 · bust 34" · cup A/B · waist 24.5" · hips 35.5" · dress 36 EU/6 US/8 UK  
shoes size 40 EU/9 US/6.5 UK · hair brown · eyes brown



# CAROL PERLINGEIRO

height 5'9.5 · bust 34" · cup A/B · waist 24.5" · hips 35.5" · dress 36 EU/6 US/8 UK  
shoes size 40 EU/9 US/6.5 UK · hair brown · eyes brown



# CAROL PERLINGEIRO

height 5'9.5 · bust 34" · cup A/B · waist 24.5" · hips 35.5" · dress 36 EU/6 US/8 UK  
shoes size 40 EU/9 US/6.5 UK · hair brown · eyes brown



MGM  
MODELS

MGM  
MODELS

# CAROL PERLINGEIRO

height 5'9.5 · bust 34" · cup A/B · waist 24.5" · hips 35.5" · dress 36 EU/6 US/8 UK  
shoes size 40 EU/9 US/6.5 UK · hair brown · eyes brown



# CAROL PERLINGEIRO

height 5'9.5 · bust 34" · cup A/B · waist 24.5" · hips 35.5" · dress 36 EU/6 US/8 UK  
shoes size 40 EU/9 US/6.5 UK · hair brown · eyes brown





# CAROL PERLINGEIRO

height 5'9.5 · bust 34" · cup A/B · waist 24.5" · hips 35.5" · dress 36 EU/6 US/8 UK  
shoes size 40 EU/9 US/6.5 UK · hair brown · eyes brown



# CAROL PERLINGEIRO

height 5'9.5 · bust 34" · cup A/B · waist 24.5" · hips 35.5" · dress 36 EU/6 US/8 UK  
shoes size 40 EU/9 US/6.5 UK · hair brown · eyes brown



# CAROL PERLINGEIRO

height 5'9.5 · bust 34" · cup A/B · waist 24.5" · hips 35.5" · dress 36 EU/6 US/8 UK  
shoes size 40 EU/9 US/6.5 UK · hair brown · eyes brown



MGM  
MODELS

MGM  
MODELS

# CAROL PERLINGEIRO

height 5'9.5 · bust 34" · cup A/B · waist 24.5" · hips 35.5" · dress 36 EU/6 US/8 UK  
shoes size 40 EU/9 US/6.5 UK · hair brown · eyes brown



# CAROL PERLINGEIRO

height 5'9.5 · bust 34" · cup A/B · waist 24.5" · hips 35.5" · dress 36 EU/6 US/8 UK  
shoes size 40 EU/9 US/6.5 UK · hair brown · eyes brown



# CAROL PERLINGEIRO

height 5'9.5 · bust 34" · cup A/B · waist 24.5" · hips 35.5" · dress 36 EU/6 US/8 UK  
shoes size 40 EU/9 US/6.5 UK · hair brown · eyes brown



# CAROL PERLINGEIRO

height 5'9.5 · bust 34" · cup A/B · waist 24.5" · hips 35.5" · dress 36 EU/6 US/8 UK  
shoes size 40 EU/9 US/6.5 UK · hair brown · eyes brown



# September

Victoria Beckham described the rise of pastel colours perfectly when she explained: "They're ice-cream colours, but not too sweet or saccharine." Just how we like our ice cream then... And a delicious update for winter!

By Anja Joubert  
Photographs by Higor Bastos

Mix two of the hottest trends right now – wide-legged trousers and the vertical pants stripe. Add some pops of pink and you're all good.

Crop top, R649, Champion at SportsScene; En Pointe wide-legged pants, R1 299, and En Pointe platform slides, R799, both Puma

# CAROL PERLINGEIRO

height 5'9.5 · bust 34" · cup A/B · waist 24.5" · hips 35.5" · dress 36 EU/6 US/8 UK  
shoes size 40 EU/9 US/6.5 UK · hair brown · eyes brown



MGM  
MODELS

MGM  
MODELS



# CAROL PERLINGEIRO

height 5'9.5 · bust 34" · cup A/B · waist 24.5" · hips 35.5" · dress 36 EU/6 US/8 UK  
shoes size 40 EU/9 US/6.5 UK · hair brown · eyes brown



**Italian label Kappa is on fire delivering both sportiness and a solid dose of 90s nostalgia. Its logo - of a naked man and woman sitting back to back - is legendary.**

**CAROL:**  
Crop top, R649, Kappa; bikini bottoms, R400, and track pants, R700, both Billabong

**KUYAN:**  
Tank top, R299, Nike at Sportscene; Puma X Diamond track pants, R2 399, Puma